

# Notice to Mariners

## Nearshore Marker Buoy Installation– OEC – February 2023

Moray West Offshore Wind Farm

<b>Issue date</b>	8 February 2023
<b>Version</b>	02
<b>Activity</b>	Nearshore Marker Buoys Installation

## Revision History

Version	Issue Date	Status	Updates
01	24 January 2023	Final	First Issue
02	8 February 2023	Final	Second Issue (additional information on temporary water depth reduction at nearshore)

## 1. Introduction

This is an amended version of the notice to mariners originally issued on 24 January 2023 is to inform that Moray Offshore Windfarm (West) Limited (Moray West) will install a nearshore Horizontal Directional Drill (HDD) exit points marker buoy on or around the revised date of **9<sup>th</sup> February 2023**, to mark the location of an area of temporary reduction in navigable depth due to works associated with the installation of HDPE pipes into holes drilled underneath the seabed to allow later installation of electricity cables. Details of the buoy and its location are provided below. A further NtM will be issued when the buoy is removed.

Once the nearshore marker buoy is installed during the initial HDD diving works by Isle of Jura, it will stay in position until the Offshore Export Cables (OEC) installation works at nearshore area are fully completed. Forecasted to be completed around **31 December 2023**, but the exact duration and the nearshore marker buoys recovery date will depend on overall project progress.

## 2. Nearshore Marker Buoy Installation Works

Two holes will be drilled in the seabed to connect the onshore and offshore sections of the electricity export cables that form part of the Moray West Offshore Windfarm. These holes will be lined with HDPE pipes prior to the later installation of the offshore export cables. After the installation of each HDPE pipe into the drilled hole, there will be a temporary reduction of the water depth in two small areas of seabed by more than 5%. This is anticipated to be up to a maximum of 15% navigable depth reduction at -10m LAT (i.e. the HDPE pipes will protrude up to 1.5 m above seabed and therefore navigable depth above the pipes will be temporarily reduced from approximately 10m LAT to approximately 8.5m LAT), during the time that the HDPE pipe is temporarily stabilised on the seabed prior to permanent burial or protection applied. For the duct ends diving preparatory works at nearshore, the scope of work includes the installation of a nearshore marker buoy which will be deployed by Isle of Jura.

The area (coordinates shown in red) where the water depth reduction may exceed 5% is shown in Figure 1 for each HDD.

Figure 1: Location where the depth reduction may exceed 5% temporarily.

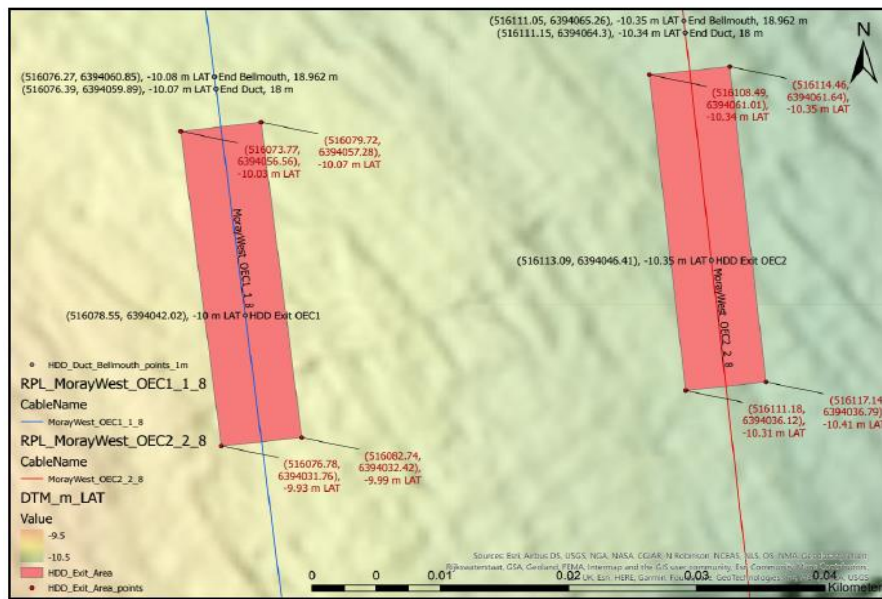


Table 1: coordinates of area for each HDD where temporary water depth reduction may exceed 5%

WGS84 UTM 30N E	WGS84 UTM 30N N	Lat (DMS)*	Long (DMS)*	OSGB36 E	OSGB36 N
516108.49	6394061.01	57° 40' 78.54036 "N	02° 43' 47.35589" W	356585.26	866750.35
516114.46	6394061.64	57° 40' 78.55996" N	02° 43' 46.99527" W	356591.24	866750.9
516111.18	6394036.12	57° 40' 77.73515" N	02° 43' 47.19946" W	356587.58	866725.43
516117.14	6394036.79	57° 40' 77.75605" N	02° 43' 46.83944" W	356593.55	866726.01
516073.77	6394056.56	57° 40' 78.40093" N	02° 43' 49.45336" W	356550.47	866746.42
516079.72	6394057.28	57° 40' 78.42345" N	02° 43' 49.09392" W	356556.44	866747.05
516076.78	6394031.76	57° 40' 77.59860" N	02° 43' 49.27757" W	356553.12	866721.57
516082.74	6394032.42	57° 40' 77.61917" N	02° 43' 48.91755" W	356559.09	866722.15

The nearshore marker buoy details and proposed location/coordinates are provided below.

Table 2: Nearshore marker buoy installation coordinates

WGS84 UTM 30N E	WGS84 UTM 30N N	Lat (DMS)*	Long (DMS)*	OSGB36 E	OSGB36 N
516097.15	6394033.73	57° 41' 17.660" N	2° 43' 48.047" W	356573.52	866723.24

### 3. General Safety Advice

Please be aware that, during the HDD work activities, by virtue of its mode of operation the Dive support vessel Isle of Jura will be Restricted in her Ability to Manoeuvre (RAM) and will also display the flag ALPHA and appropriate day shapes while diving operations are taking place as defined under COLREGs (International Regulations for Preventing Collisions at Sea 1972, Rule 3). Masters of vessels are therefore requested to maintain their vessels and gears at a minimum safe passing distance from the vessel of 500 metres when it is undertaking work and showing the appropriate shapes and lights in accordance with COLREGs Rule 27 In order to not compromise the safety of the Isle of Jura and their crew, and the ability to undertake its contracted works.

### 4. Vessel Information

The nearshore marker buoy installation will be carried out by the diving vessel Isle of Jura.

*Table 3. Isle of Jura General Information*

<b>Vessel Name</b>	Isle of Jura
<b>MMSI Number</b>	232021966
<b>Operating Company</b>	Seafast Maritime Ltd
<b>Vessel Call Sign</b>	MFFY6
<b>Vessel Mobile Phone Number</b>	+881641499304
<b>Vessel Email Address</b>	<a href="mailto:jura@seafastltd.co.uk">jura@seafastltd.co.uk</a>

*Figure 2. Isle of Jura*



## 5. Nearshore Marker Buoys Information

The nearshore marker buoys details are provided below.

Table 4. Marker Buoys – Gannet G1500 details

<i>Gannet G1500 (Ø1500mm)</i>				
Product / Codes	Description	Qty.	Unit Price £	Total Price £
G1500-DM1-SM	<p>G1500 (Ø1500mm) Gannet Navigation Buoy fitted with High Visibility CAN Day Mark fitted with Radar Reflector and Top Mark.</p> <p>Buoy (Float)Diameter: 1500mm Focal height: 2150mm (Nom.) Overall height: 3400mm (with Top Mark fitted)</p> <p>Special Mark Buoy – Yellow, CAN Shape Top Mark – Single Yellow “X”</p> <p>Lifting Eyes: Two (2) ; Mooring Eyes: Two (2)</p> <p>Material: Core structure: Galvanized Steel Floatation and Day Mark section: marine Grade UV Stabilised Virgin Polyethylene,</p> <p>Sacrificial Anodes – Zinc (replaceable) Fixings: 316L Stainless Steel</p> <p>Overall Weight: 420Kgs Max. (including Ballast)</p>	1		
M6602B-Y	<p>Solar Powered LED Marine Lantern Colour: Yellow, Range: 2Nmiles Flash character: Fl 5secs</p>	1		
Mooring Systems	<p>Mooring system will comprise of - 2 x 2mts Bridles, 25mm U2 Chain 5 x 8.5t GP Shackles, 1 1/8” Swivel 1 x 22mts Pendant, 25mm U2 Chain</p>	1		
	<p>1,000kgs Concrete Sinker Block</p>	1		

## 6. Developer Contacts Details

Enquiries regarding the contents of this Notice to Mariners should be directed to Moray West team (contact details below).

For fisheries related matters, please contact the Fisheries Manager or Moray West Company Fisheries Liaison Officer, using the contact details provided below:

### **Technical and Survey Planning**

Silvia Gonzalez Rodriguez (Offshore Export Cables Package Manager)  
Address: 144 Morrison St., Edinburgh, EH3 8EX  
Email: [silvia.gonzalez@oceanwinds.com](mailto:silvia.gonzalez@oceanwinds.com)  
Tel: +44 (0) 7551 125761

### **Consenting**

Moray West Development Team  
Address: 144 Morrison St., Edinburgh, EH3 8EX  
Email: [development@moraywest.com](mailto:development@moraywest.com)  
Tel: +44 (0) 131 556 7602

### **Health, Safety and Other Matters**

Richard Pargeter (Head of HSSE)  
Address: 144 Morrison St., Edinburgh, EH3 8EX  
Email: [richard.pargeter@oceanwinds.com](mailto:richard.pargeter@oceanwinds.com)  
Tel: +44 (0) 1315 567602

### **Fishing Enquiries**

Iain McMyn (Fishery Manager)  
Address: 144 Morrison St., Edinburgh, EH3 8EX  
Email: [Iain.McMyn@oceanwinds.com](mailto:Iain.McMyn@oceanwinds.com)  
Tel: +44 (0) 7780 191088

Alex Winrow-Giffin, Brown and May Marine (Company Fisheries Liaison Officer)  
Email: [alex@brownmay.com](mailto:alex@brownmay.com)  
Tel: +44 (0) 7760 160039

### **Moray West Marine Coordination**

<b>Marine Coordination</b>	<b>Contact</b>
Duty Marine Coordinator – 24 hours	+44 (0) 7774 663504 <a href="mailto:mcc@moraywest.com">mcc@moraywest.com</a>
Call sign – Moray West Traffic	VTS CH16 & CH87