

# Notice to Mariners

## Offshore Substation Installation – November 2023

Moray West Offshore Wind Farm

|                   |                                      |
|-------------------|--------------------------------------|
| <b>Issue date</b> | 20 November 2023                     |
| <b>Version</b>    | 02                                   |
| <b>Activity</b>   | Installation of Offshore Substations |

## Revision History

| <b>Version</b> | <b>Issue Date</b> | <b>Status</b> | <b>Updates</b> |
|----------------|-------------------|---------------|----------------|
| 01             | 17 November 2023  | For Review    | First Issue    |
| 02             | 20 November 2023  | For Issue     | Updated        |

# 1. Introduction

This notice to mariners is to inform that Moray Offshore Windfarm (West) Limited (“**Moray West**”) will be commencing Offshore Substation installation works at the Moray West Offshore Wind Farm (Windfarm Marine Licence MS-00009774) from 26 November 2023. The work comprises of J tube cage installation, OSP-TP, and Topside installation at Monopile locations E06 (OSP #1) and M11 (OSP #2).

The Moray West wind farm site is located on the Smith Bank in the Outer Moray Firth, approximately 22.5km from the Caithness coastline, as shown in Figure 1.

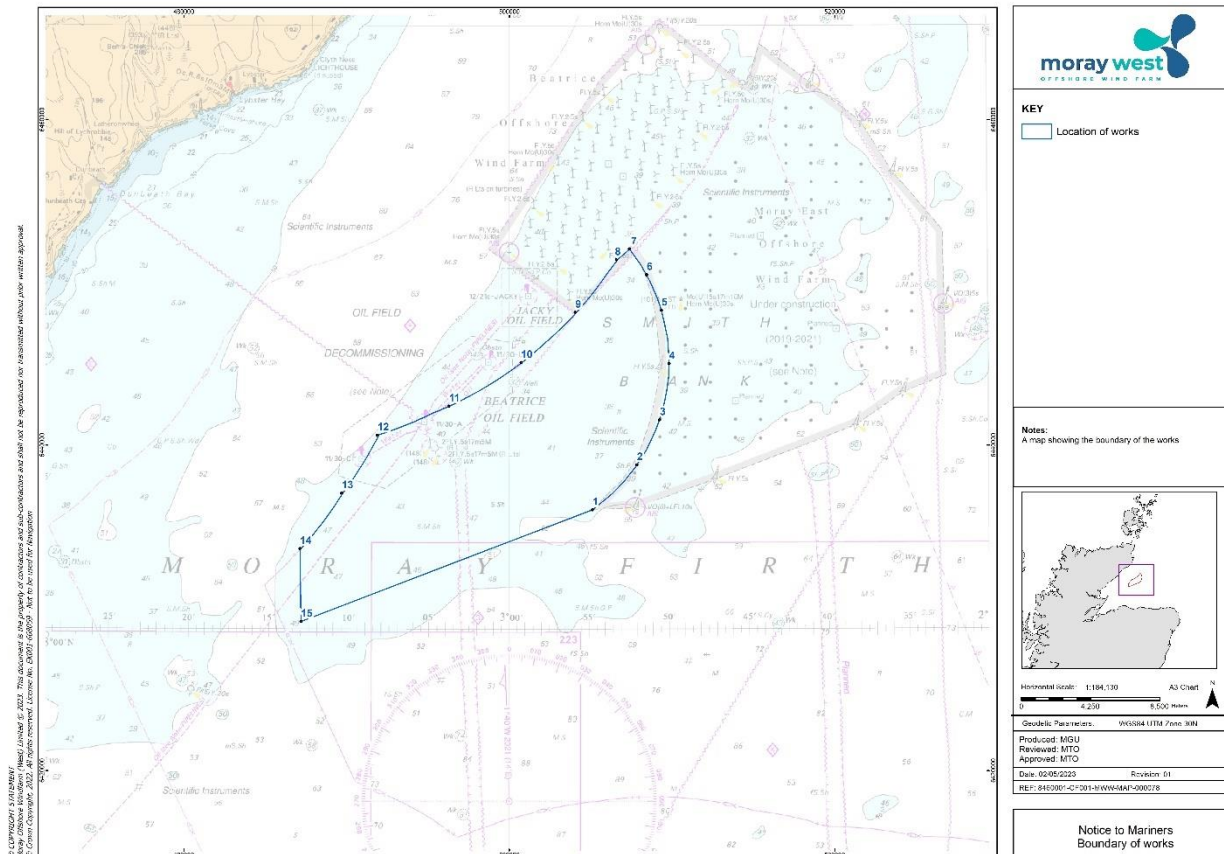


Figure 1. Moray West Wind Farm Site

The Offshore Substation installation works are to take place within the red boundary shown in the figure below (Figure 2).

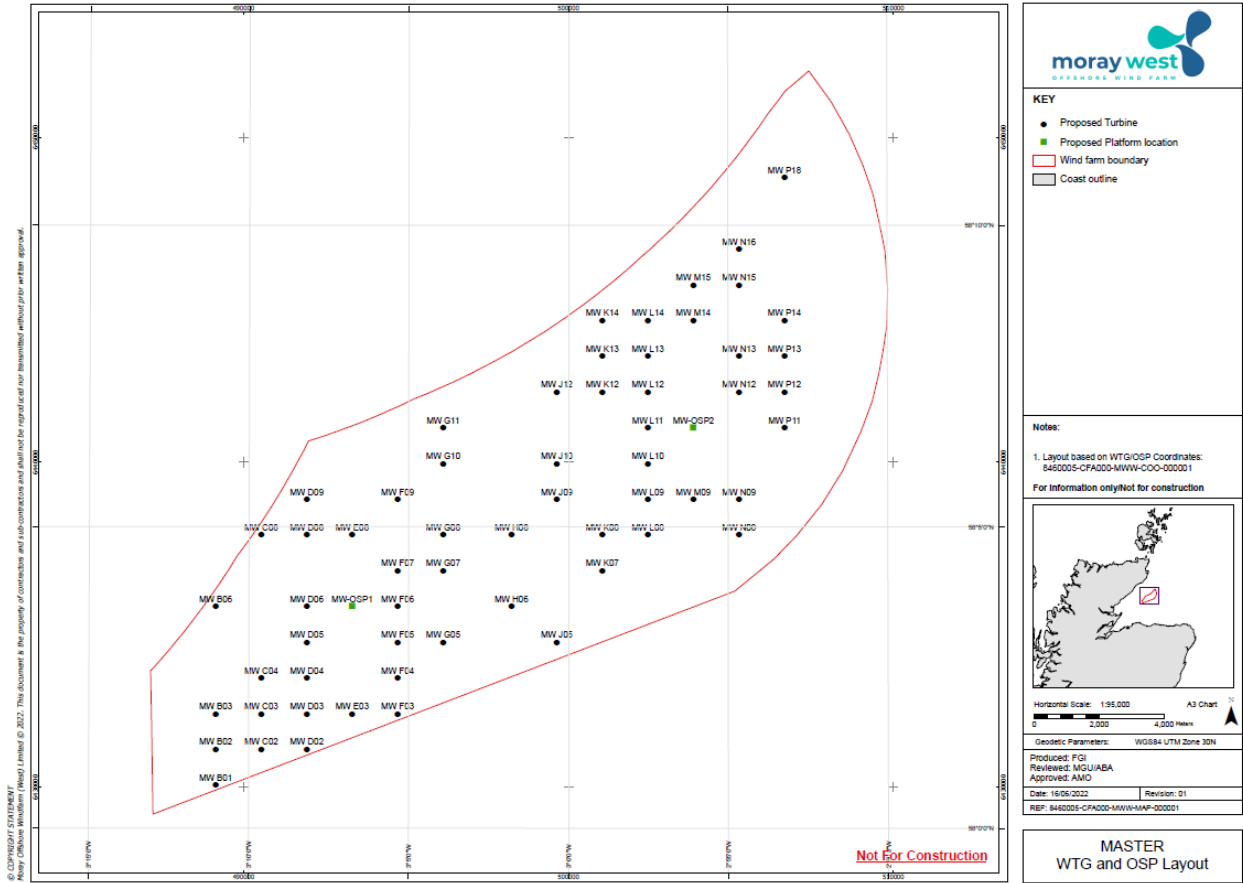


Figure 2. Moray West wind farm site – Location of the works

The works are anticipated to commence on 26 November 2023, and the duration of the works is forecasted to be completed by mid/ end December 2023. The exact duration and completion date will depend on the weather and progress of the works.

## 2. Offshore Substation installation works

The scope of work includes the installation of 2x J-Tube cages (JTC), 2x OSP-TPs and 2x Topsides. The installation of the offshore substations will be carried out with the dynamically positioned installation vessels Bokalift1.

Table 1. Coordinates of proposed works

| Monopile Installation – Co-ordinates |                    |                     |                |                 |
|--------------------------------------|--------------------|---------------------|----------------|-----------------|
| Location ID                          | UTM30N Easting (m) | UTM30N Northing (m) | WGS84 Latitude | WGS84 Longitude |
| MW B01                               | 489142.70          | 6430070.97          | 58° 0.725' N   | 3° 11.025' W    |
| MW B02                               | 489142.70          | 6431170.97          | 58° 1.318' N   | 3° 11.028' W    |
| MW B03                               | 489142.70          | 6432270.97          | 58° 1.911' N   | 3° 11.031' W    |
| MW B06                               | 489142.70          | 6435570.97          | 58° 3.689' N   | 3° 11.040' W    |
| MW C02                               | 490542.70          | 6431170.97          | 58° 1.320' N   | 3° 9.606' W     |
| MW C03                               | 490542.70          | 6432270.97          | 58° 1.913' N   | 3° 9.608' W     |
| MW C04                               | 490542.70          | 6433370.97          | 58° 2.506' N   | 3° 9.611' W     |
| MW C08                               | 490542.70          | 6437770.97          | 58° 4.877' N   | 3° 9.622' W     |
| MW D02                               | 491942.70          | 6431170.97          | 58° 1.322' N   | 3° 8.184' W     |
| MW D03                               | 491942.70          | 6432270.97          | 58° 1.915' N   | 3° 8.186' W     |
| MW D04                               | 491942.70          | 6433370.97          | 58° 2.507' N   | 3° 8.188' W     |
| MW D05                               | 491942.70          | 6434470.97          | 58° 3.100' N   | 3° 8.191' W     |
| MW D06                               | 491942.70          | 6435570.97          | 58° 3.693' N   | 3° 8.193' W     |
| MW D08                               | 491942.70          | 6437770.97          | 58° 4.879' N   | 3° 8.197' W     |
| MW D09                               | 491942.70          | 6438870.97          | 58° 5.471' N   | 3° 8.200' W     |
| MW E03                               | 493342.70          | 6432270.97          | 58° 1.916' N   | 3° 6.764' W     |
| MW E08                               | 493342.70          | 6437770.97          | 58° 4.880' N   | 3° 6.773' W     |
| MW F03                               | 494742.70          | 6432270.97          | 58° 1.917' N   | 3° 5.341' W     |
| MW F04                               | 494742.70          | 6433370.97          | 58° 2.510' N   | 3° 5.343' W     |
| MW F05                               | 494742.70          | 6434470.97          | 58° 3.103' N   | 3° 5.344' W     |
| MW F06                               | 494742.70          | 6435570.97          | 58° 3.696' N   | 3° 5.346' W     |
| MW F07                               | 494742.70          | 6436670.97          | 58° 4.288' N   | 3° 5.347' W     |
| MW F09                               | 494742.70          | 6438870.97          | 58° 5.474' N   | 3° 5.350' W     |
| MW G05                               | 496142.70          | 6434470.97          | 58° 3.104' N   | 3° 3.921' W     |
| MW G07                               | 496142.70          | 6436670.97          | 58° 4.289' N   | 3° 3.923' W     |
| MW G08                               | 496142.70          | 6437770.97          | 58° 4.882' N   | 3° 3.924' W     |
| MW G10                               | 496142.70          | 6439970.97          | 58° 6.068' N   | 3° 3.927' W     |
| MW G11                               | 496142.70          | 6441070.97          | 58° 6.660' N   | 3° 3.928' W     |
| MW H06                               | 498242.70          | 6435570.97          | 58° 3.697' N   | 3° 1.787' W     |
| MW H08                               | 498242.70          | 6437770.97          | 58° 4.883' N   | 3° 1.788' W     |
| MW J05                               | 499642.70          | 6434470.97          | 58° 3.105' N   | 3° 0.363' W     |
| MW J09                               | 499642.70          | 6438870.97          | 58° 5.476' N   | 3° 0.364' W     |
| MW J10                               | 499642.70          | 6439970.97          | 58° 6.069' N   | 3° 0.364' W     |
| MW J12                               | 499642.70          | 6442170.97          | 58° 7.254' N   | 3° 0.364' W     |
| MW K07                               | 501042.70          | 6436670.97          | 58° 4.290' N   | 2° 58.939' W    |
| MW K08                               | 501042.70          | 6437770.97          | 58° 4.883' N   | 2° 58.939' W    |

|         |           |            |               |              |
|---------|-----------|------------|---------------|--------------|
| MW K12  | 501042.70 | 6442170.97 | 58° 7.254' N  | 2° 58.938' W |
| MW K13  | 501042.70 | 6443270.97 | 58° 7.847' N  | 2° 58.938' W |
| MW K14  | 501042.70 | 6444370.97 | 58° 8.440' N  | 2° 58.937' W |
| MW L08  | 502442.70 | 6437770.97 | 58° 4.883' N  | 2° 57.515' W |
| MW L09  | 502442.70 | 6438870.97 | 58° 5.475' N  | 2° 57.514' W |
| MW L10  | 502442.70 | 6439970.97 | 58° 6.068' N  | 2° 57.513' W |
| MW L11  | 502442.70 | 6441070.97 | 58° 6.661' N  | 2° 57.513' W |
| MW L12  | 502442.70 | 6442170.97 | 58° 7.254' N  | 2° 57.512' W |
| MW L13  | 502442.70 | 6443270.97 | 58° 7.847' N  | 2° 57.511' W |
| MW L14  | 502442.70 | 6444370.97 | 58° 8.439' N  | 2° 57.511' W |
| MW M09  | 503842.70 | 6438870.97 | 58° 5.475' N  | 2° 56.089' W |
| MW M14  | 503842.70 | 6444370.97 | 58° 8.439' N  | 2° 56.084' W |
| MW M15  | 503842.70 | 6445470.97 | 58° 9.032' N  | 2° 56.083' W |
| MW N08  | 505242.70 | 6437770.97 | 58° 4.881' N  | 2° 54.666' W |
| MW N09  | 505242.70 | 6438870.97 | 58° 5.474' N  | 2° 54.665' W |
| MW N12  | 505242.70 | 6442170.97 | 58° 7.252' N  | 2° 54.660' W |
| MW N13  | 505242.70 | 6443270.97 | 58° 7.845' N  | 2° 54.659' W |
| MW N15  | 505242.70 | 6445470.97 | 58° 9.031' N  | 2° 54.656' W |
| MW N16  | 505242.70 | 6446570.97 | 58° 9.624' N  | 2° 54.654' W |
| MW P11  | 506642.70 | 6441070.97 | 58° 6.658' N  | 2° 53.236' W |
| MW P12  | 506642.70 | 6442170.97 | 58° 7.251' N  | 2° 53.234' W |
| MW P13  | 506642.70 | 6443270.97 | 58° 7.844' N  | 2° 53.233' W |
| MW P14  | 506642.70 | 6444370.97 | 58° 8.437' N  | 2° 53.231' W |
| MW P18  | 506642.70 | 6448770.97 | 58° 10.808' N | 2° 53.223' W |
| MW-OSP1 | 493342.70 | 6435570.97 | 58° 3.694' N  | 3° 6.769' W  |
| MW-OSP2 | 503842.70 | 6441070.97 | 58° 6.660' N  | 2° 56.087' W |

### 3. General Safety Advice

Please be aware that, during the offshore substation installation works, the Bokalift 1, by virtue of its mode of operation the vessel, will be Restricted in its Ability to Manoeuvre (RAM). Masters of vessels are requested to maintain their vessels and gears at a minimum safe passing distance from the vessel of 500 meters when it is undertaking work and showing the appropriate shapes and lights in accordance with COLREGs Rule 27 (International Regulations for Preventing Collisions at Sea 1972, Rule 3).

## 4. Vessel Information

OSP installation will be carried out by the vessel **Bokalift 1**.

Table 2. Bokalift1 General Information

|                            |   |
|----------------------------|---|
| Vessel Name                | <b>Bokalift 1</b>   |
| MMSI Number                | 212827000   |
| Operating Company          | Boskalis  |
| Vessel Call Sign           | 5BVH4   |
| Vessel Mobile Phone Number | <b>Captain Office:</b> +47 22408032<br><b>Bridge:</b> +47 22408028<br><b>Mobile:</b> +31 650006028<br><b>Fleet Manager:</b><br>T: +31 78 69 69 169<br>M: +31 62 21 42 310 |
| Vessel Email Address       | <a href="mailto:bokalift1-captain@boskalis.com">bokalift1-captain@boskalis.com</a><br><a href="mailto:bokalift1-bridge@boskalis.com">bokalift1-bridge@boskalis.com</a>    |



Figure 3. Bokalift1

## 5. Developer Contacts Details

Enquiries regarding the contents of this Notice to Mariners should be directed to Moray West team (contact details below).

For fisheries related matters, please contact the Fisheries Manager or Moray West Company Fisheries Liaison Officer Project Development Associate, using the contact details provided below:

### **Technical Planning**

Michael Spiegl (T&I Package Manager)  
Address: 144 Morrison St., Edinburgh, EH3 8EX  
Email: [michael.spiegl@oceanwinds.com](mailto:michael.spiegl@oceanwinds.com)  
Tel: +44 (0) 7557 611862

### **Consenting**

Moray West Development Team  
Address: 144 Morrison St., Edinburgh, EH3 8EX  
Email: [development@moraywest.com](mailto:development@moraywest.com)  
Tel: +44 (0) 131 556 7602

### **Health, Safety and Other Matters**

Richard Pargeter (Head of HSSE)  
Address: 144 Morrison St., Edinburgh, EH3 8EX  
Email: [richard.pargeter@oceanwinds.com](mailto:richard.pargeter@oceanwinds.com)  
Tel: +44 (0) 1315 567602

### **Fishing Enquiries**

Iain McMyn (Fishery Manager)  
Address: 144 Morrison St., Edinburgh, EH3 8EX  
Email: [Iain.McMyn@oceanwinds.com](mailto:Iain.McMyn@oceanwinds.com)  
Tel: +44 (0) 7780 191088

Alex Winrow-Giffin, Brown and May Marine (Company Fisheries Liaison Officer)  
Email: [alex@brownmay.com](mailto:alex@brownmay.com)  
Tel: +44 (0) 7760 160039

### **Moray West Marine Coordination**

| <b>Marine Coordination</b>     | <b>Contact</b>  |
|--------------------------------|---|
| Marine Coordinator – 24hrs     | +44 (0) 7774 663504<br><a href="mailto:mcc@moraywest.com">mcc@moraywest.com</a> |
| Call sign – Moray West Traffic | VTS CH16 & CH87   |